

ITEM NO.	PART NUMBER	DESCRIPTION	QTY.
1	01-2039	SCREW, HHM, 3/8-24 X 1	1
2	20-0035	BODY, 1½" NPT	1
3	20-0096	NUT, HEX	1
4	20-0097	GUIDE, POPPET	1
5	20-1589	SPRING BOTTOM	1
6	20-1961	HOUSING, POPPET SEAT	1
7	20-1970	GUIDE, POPPET	1
8	SEE TBL (SM)	SEAT POPPET	1
9	SEE TBL (SM)	O-RING	1

SEAL MATERIAL OPTIONS (SM)			
CODE	MATERIAL	O-RING	POPPET SEAT
STD	BUNA - N+VITON	04-01-225	20-0629
-25	MOLY CTD BUNA		
-26	VITON	04-09-225	20-0629
-28	VITON+TEFLON		
-29	EPR		
-32	TEF+EPR+VIT		

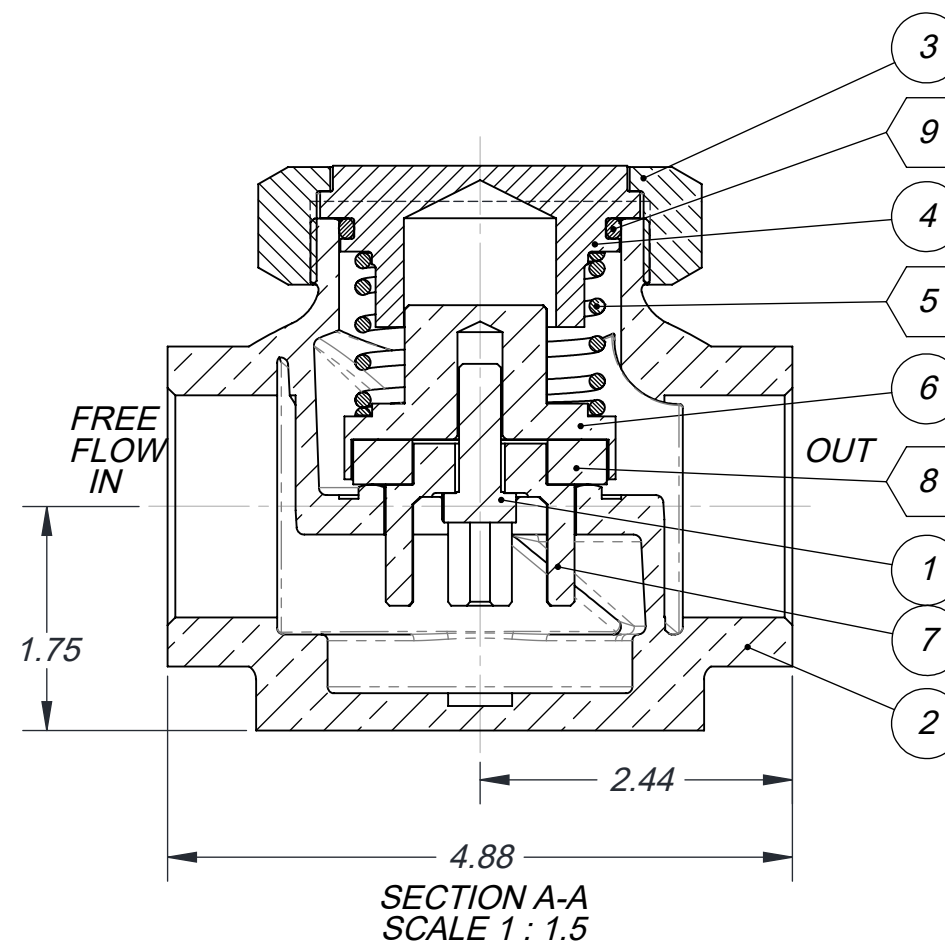
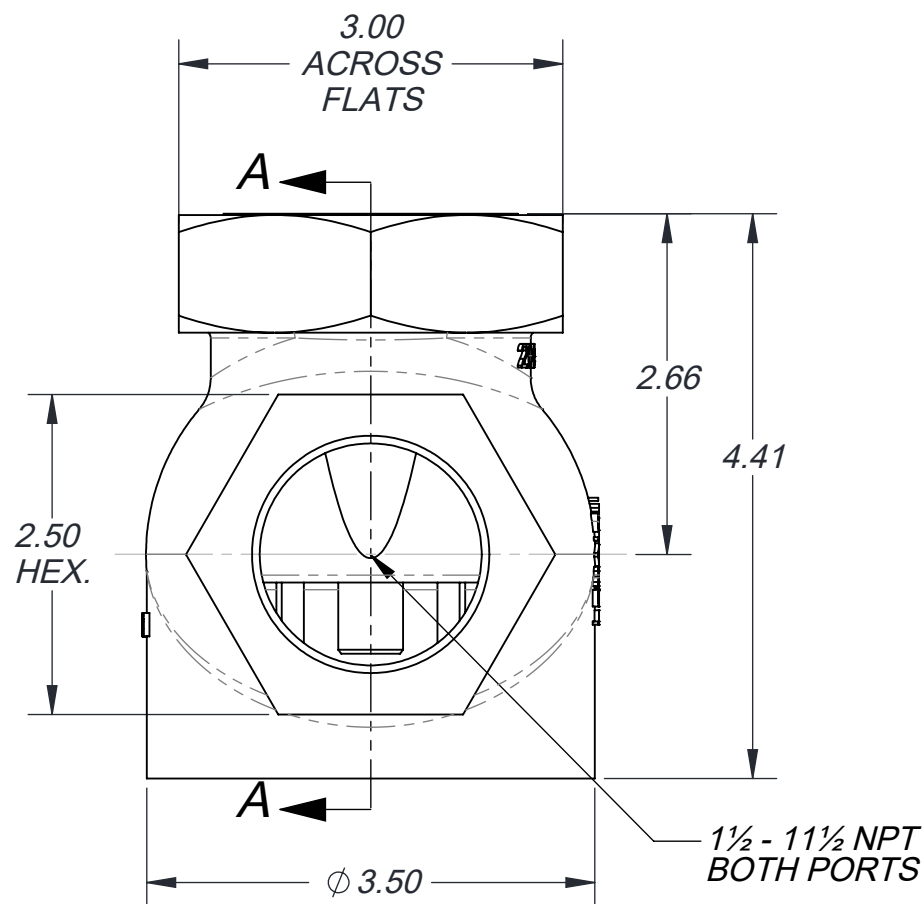
550124 - SM

B550124

NOTES:

- PARTS IN HEXAGON BOX ARE INCLUDED IN BOTH ASSEMBLY AND REPAIR KITS. SEE TABLE (R/K) FOR REPLACEMENT PART NO.
- PRESSURE RATING: 0 - 500 PSI
- TEMP. RANGE: -30° F TO 225° F STD. (300° F OPT. SEALS)
- USE LOCTITE 222MS ON ITEM 1 AND TORQUE TO 65 LBS-IN.

REPAIR KITS (R/K)	
MATERIAL	PART NO.
BUNA - N	25-0104
VITON	25-0904



THIS DOCUMENT AND ITS CONTENTS ARE THE PROPERTY OF LEXAIR, INC. THEY ARE FURNISHED TO YOU ON THE FOLLOWING CONDITIONS: NO RIGHT OR LICENSE IN RESPECT OF THIS DOCUMENT OR ITS CONTENTS IS GIVEN OR WAIVED IN SUPPLYING THE DOCUMENT TO YOU. THIS DOCUMENT OR ITS CONTENTS ARE NOT TO BE USED OR TREATED IN ANY MANNER INCONSISTENT WITH THE RIGHTS OF LEXAIR, INC. OR TO ITS DETRIMENT AND ARE NOT TO BE COPIED, REPRODUCED, OR DISCLOSED OF, EXCEPT WITH ITS PRIOR WRITTEN CONSENT.

REVISIONS

- A** REDRAWN TO CURRENT ENGINEERING STANDARDS
ECL: 99238 JDR 11-10-99
- B** ADDED TORQUE SPEC. TO ITEM 9 AND REPLACED THREAD SEALANT WITH LOCTITE 222MS.
- C** REDRAWN TO CURRENT ENGINEERING STANDARDS
ECL: 21036 TES 06-23-21

Tolerances Unless Otherwise Specified:		
TYPE	FINISHED	AS CAST
DEC .00	± .015	± .030
DEC .000	± .005	± .010
FRACTIONAL	± 1/64	± 1/32
ANGLES	± 1/2°	± 1°

MATERIAL SPEC.
SEE TABLE
PROCESS SPEC.

PC. NO. 550124

MADE FROM

1½" NPT CHECK VALVE

B 550124

CAD FILE 550124.drw

Lexair, Inc.
2025 Mercer RD, Lexington, Kentucky 40511

DRAWN	CHECKED	APRVD.
JDR	MFM	MFM
11-10-99	01-28-00	01-28-00

SHEET NO. 1 of 1 SHEETS
SCALE 1:1
APPROX. WT. 8.308 lbs.